

## 1 GREY AREA

**WHITE AREA** FOR SHOULDER STRIPES, A DIFFERENT AND MONOCHROMATIC COLOR MUST BE USED

### PRINTABLE AREA

This model of suit can be customized through the use of **high resolution images, photos and color blendings**. This peculiar feature is possible thanks to our own technology "OMP Printart".

**The customizable area is shown in grey in the picture.**

For the best result, please follow scrupulously the following instructions.

- All logos must be forwarded in vectorial format (.ai/.eps/.pdf);** also the texts, if present, must be included in the file and converted in curves.
- All colours of the grey area needs to be specified strictly with a pantone code.**  
Please find here the link <https://www.pantone.com/color-finder>.  
Particular effects given by the designers, like shades or transparencies, cannot be realised and granted on the final overall as shown on the screen.

## 2 CYAN AREA

ELASTHAN FABRIC - NOT PRINTABLE/EMBROIDERABLE

WHITE	NAVY BLUE	EXPRIT BLUE	VIOLET	BLACK	RED	GREEN	CYAN	EXPRIT ORANGE
X/119/020	X/119/042	X/119/041EX17	X/119/001	X/119/071	X/119/061	X/119/037	X/119/040	X/119/090EX17

## 3 PINK AREA

BREATHABLE NET

WHITE	SILVER	ROYAL BLUE	NAVY BLUE	EXPRIT BLUE	RED	GREEN	BLACK
X/134/RETE/020	X/134/RETE/080	X/134/RETE/041	X/134/RETE/042	X/134/RETE/15415	X/134/RETE/061	X/134/RETE/037	X/134/RETE/071

## 4 YELLOW AREA

WRIST AND ANKLE CUFF'S FABRIC

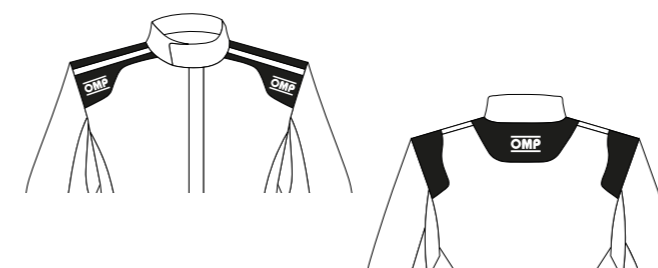
WHITE	SILVER	ROYAL BLUE	NAVY BLUE	RED	EXPRIT BLUE	GREEN	BLACK	YELLOW
X/106E/022	X/106E/083	X/106E/041	X/106E/042	X/106E/061	X/106E/041EX17	X/106E/037B	X/106E/071	X/106E/051

## 5 OMP LOGO AND MODEL

The OMP logo has a fixed position on shoulders and back.

**IT CANNOT BE ALTERED OR REMOVED.**

**IT ALWAYS MUST BE WELL VISIBLE AND IN CONTRAST WITH THE BACKGROUND COLOR.**



The suit model has a fixed position on the back.

**IT CANNOT BE ALTERED OR REMOVED.**

**IT ALWAYS MUST BE WELL VISIBLE AND IN CONTRAST WITH THE BACKGROUND COLOR.**



**Customers are aware that OMP is free to change the colour of its logo in case these indications are not respected in the sketch.**

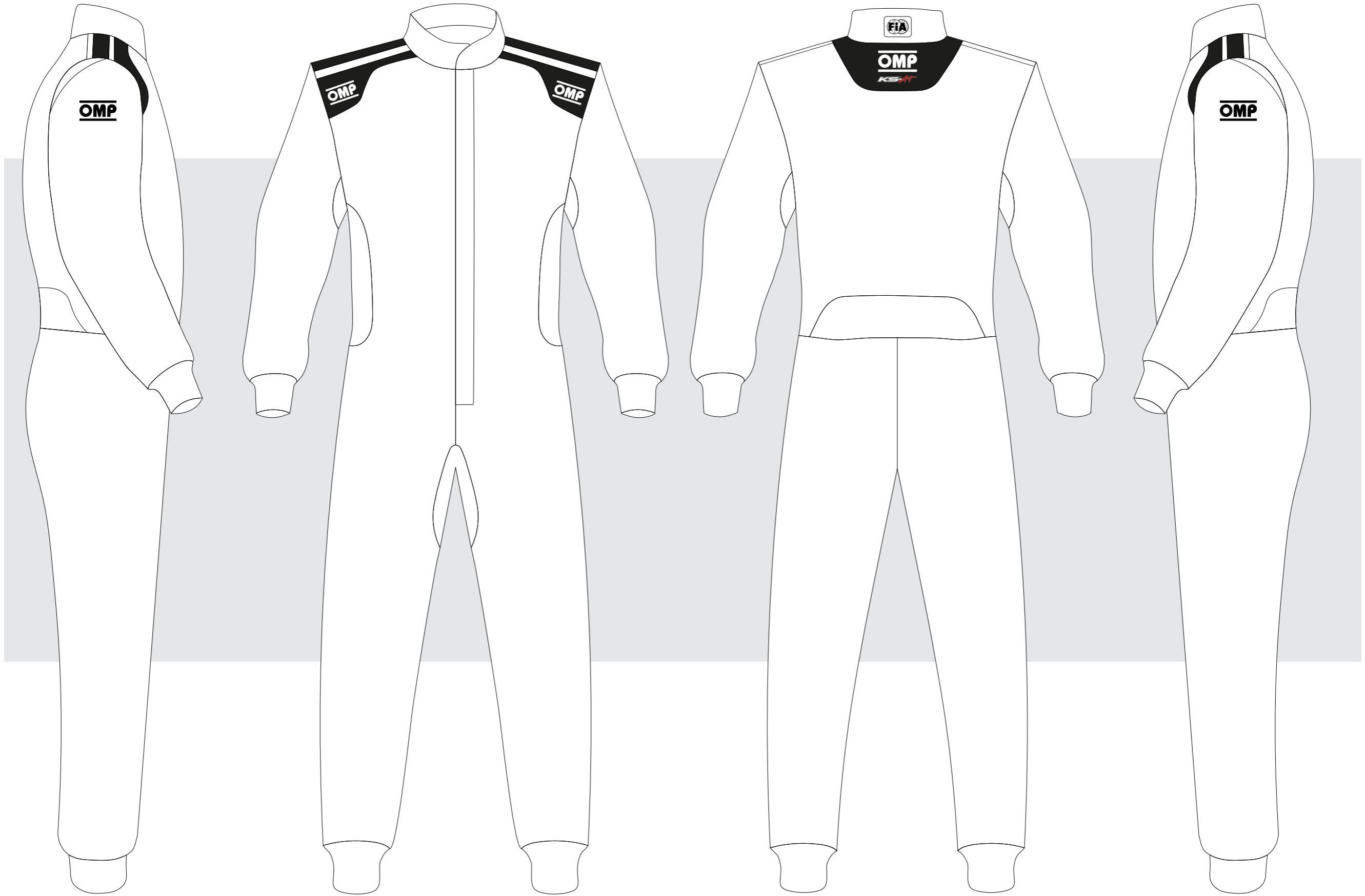


CUSTOMER: \_\_\_\_\_

TEAM: \_\_\_\_\_

DRIVER NAME: \_\_\_\_\_

CUSTOMIZED SUIT CONFIGURATOR



KA0-1726

© OMP RACING SPA - ALL RIGHTS RESERVED

THIS DESIGN IS THE INTELLECTUAL PROPERTY OF OMP RACING SPA - ANY REPRODUCTION WITHOUT PERMISSION WILL BE PROSECUTED TO THE FULLEST EXTENT OF THE LAW. By approving this sketch, the customer acknowledges that, during the process of manufacturing, variations may occur in colors and other minor aspects, because of the use of different technologies for the acquisition and reproduction of images, and for the making of the suit itself. OMP is not responsible for such variations and deviations. For further information: [www.ompracing.com](http://www.ompracing.com)

DATE: \_\_\_\_\_ REV. \_\_\_\_\_