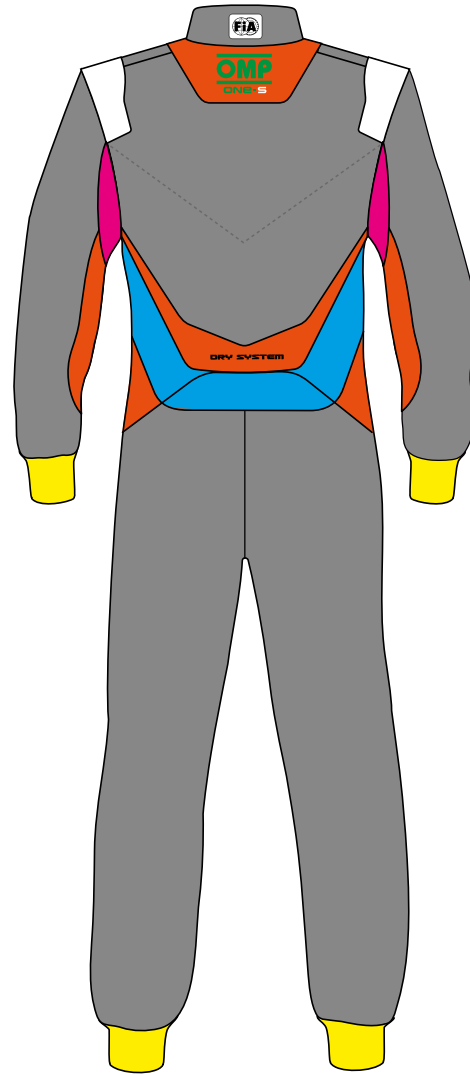
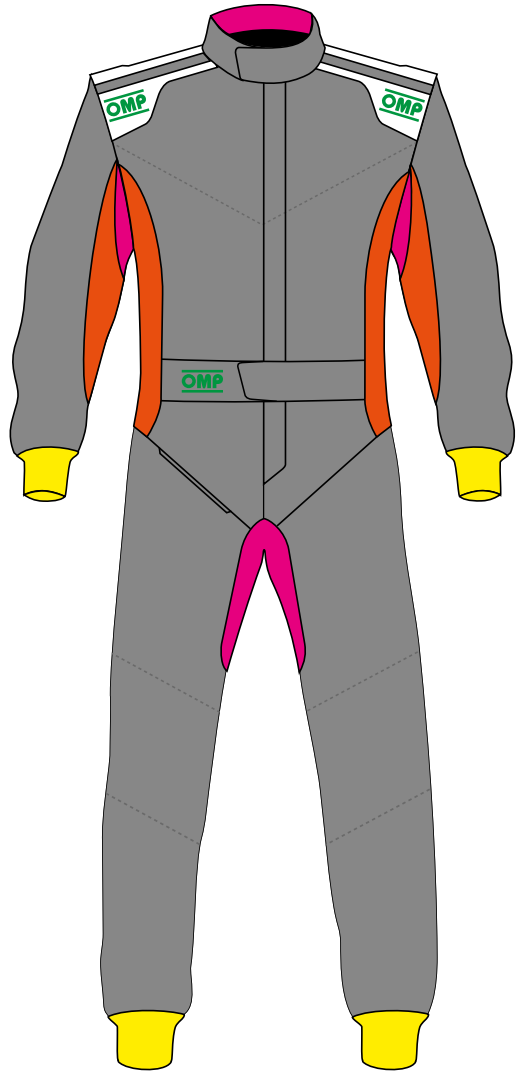


FIA 8856-2018



1 GREY AREA >60% MAIN ASSEMBLY MICROFIBRA FABRIC

WHITE AREA FOR SHOULDER STRIPES, A DIFFERENT AND MONOCHROMATIC COLOR MUST BE USED

LIGHT BLUE XTI-500-040	CYAN XTI-500-244	ROYAL BLUE XTI-500-041	NAVY BLUE XTI-500-042	BLACK XTI-500-071	ANTHRACITE X-500-082	GREY XTI-500-425C	SILVER XTI-500-080	WHITE XTI-500-020	MAGENTA XTI-500-4045	RED XTI-500-061
JAGUAR GREEN XTI-500-033	GREEN XTI-500-032	FLUO GREEN XTI-500-039	FLUO YELLOW XTI-500-099	YELLOW XTI-500-055	GOLD XTI-500-002	ORANGE XTI-500-091	FLUO ORANGE XTI-500-090			

2 CYAN AREA STRETCH FABRIC - NOT PRINTABLE/EMBROIDABLE

ROYAL BLUE XTI-608-041	NAVY BLUE XTI-608-042	RED XTI-608-061	DARK GREY XTI-608-082	BLACK XTI-608-071	FLUO YELLOW XTI-608-099
---------------------------	--------------------------	--------------------	--------------------------	----------------------	----------------------------

3 PINK AREA INTERLOCK FABRIC - NOT PRINTABLE/EMBROIDERABLE

WHITE XTI-102-020	SILVER XTI-102-081	ROYAL BLUE XTI-102-041	NAVY BLUE XTI-102-042	RED XTI-102-061	ECRÚ XTI-102-028	DARK GREY XTI-102-082	BLACK XTI-102-071	FLUO YELLOW XTI-102-099	YELLOW XTI-102-051	GREEN* XTI-102-031
----------------------	-----------------------	---------------------------	--------------------------	--------------------	---------------------	--------------------------	----------------------	----------------------------	-----------------------	-----------------------

4 YELLOW AREA WRIST AND ANKLE CUFF'S FABRIC

WHITE XTI-105-N-020	SILVER XTI-105-N-081	ROYAL BLUE XTI-105-N-041	NAVY BLUE XTI-105-N-042	RED XTI-105-N-061	ECRÚ XTI-105-N-022	DARK GREY XTI-105-N-082	BLACK XTI-105-N-071	YELLOW* XTI-105-N051	BROWN* XTI-105-N010
------------------------	-------------------------	-----------------------------	----------------------------	----------------------	-----------------------	----------------------------	------------------------	-------------------------	------------------------

5 ORANGE AREA DRY SYSTEM FABRIC - NOT PRINTABLE/EMBROIDERABLE

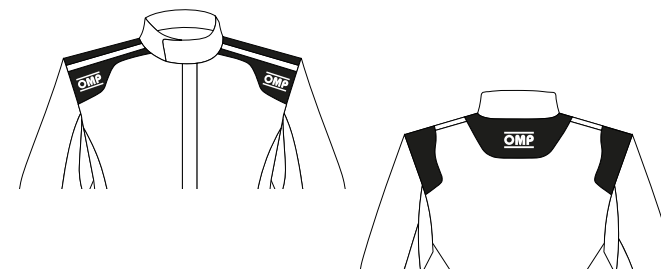
WHITE XTI-600-020	ROYAL BLUE XTI-600-041	NAVY BLUE XTI-600-042	RED XTI-600-061	DARK GREY XTI-600-082	BLACK XTI-600-071
----------------------	---------------------------	--------------------------	--------------------	--------------------------	----------------------

6 OMP LOGO AND MODEL

The OMP logo has a fixed position on shoulders and back.

IT CANNOT BE ALTERED OR REMOVED.

IT ALWAYS MUST BE WELL VISIBLE AND IN CONTRAST WITH THE BACKGROUND COLOR.



The suit model has a fixed position on the back.

IT CANNOT BE ALTERED OR REMOVED.

IT ALWAYS MUST BE WELL VISIBLE AND IN CONTRAST WITH THE BACKGROUND COLOR.



Customers are aware that OMP is free to change the colour of its logo in case these indications are not respected in the sketch.

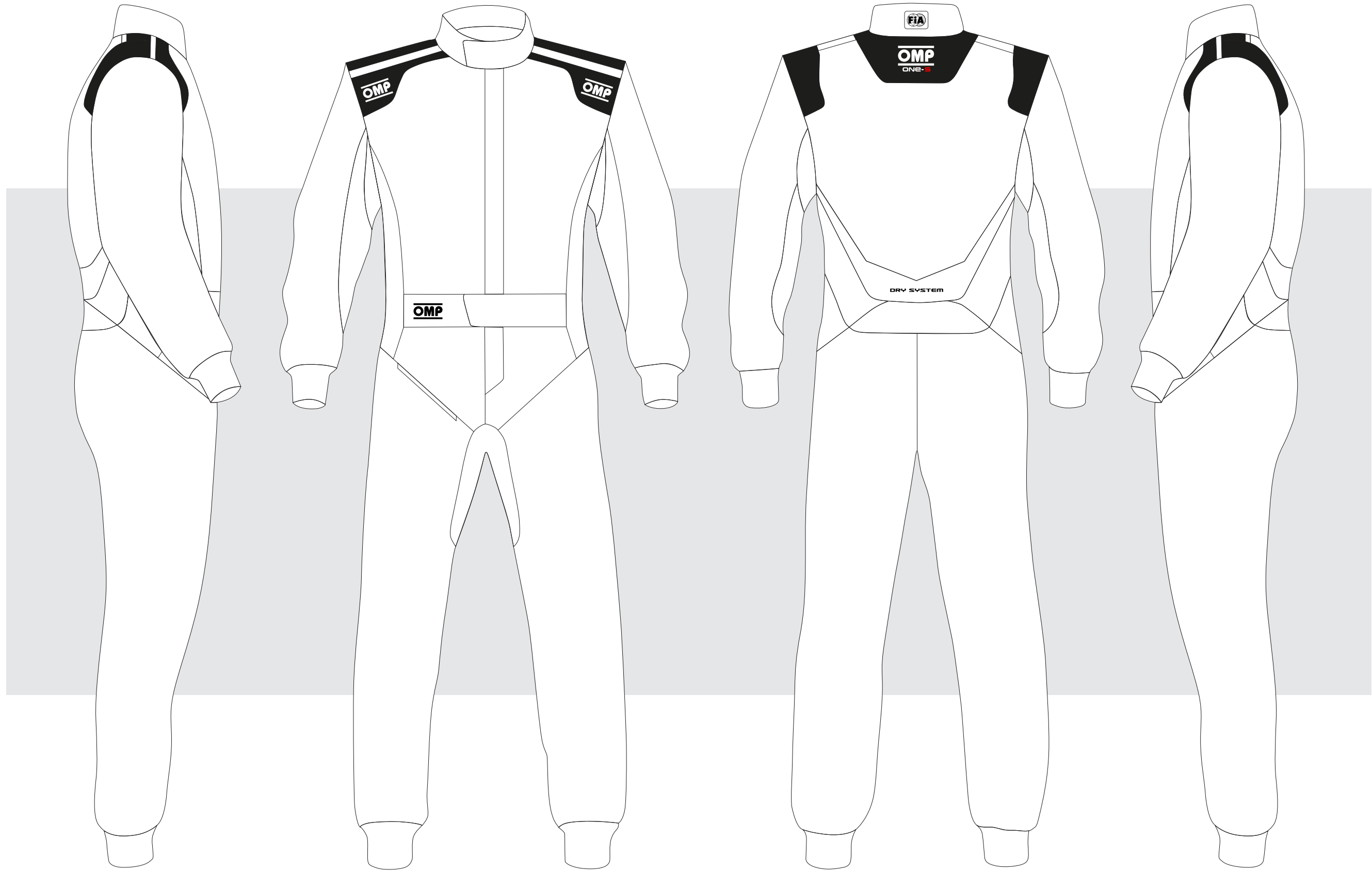


CUSTOMER: _____

TEAM: _____

DRIVER NAME: _____

CUSTOMIZED SUIT CONFIGURATOR



ONE-S

IA0-1860

© OMP RACING SPA - ALL RIGHTS RESERVED

THIS DESIGN IS THE INTELLECTUAL PROPERTY OF OMP RACING SPA - ANY REPRODUCTION WITHOUT PERMISSION WILL BE PROSECUTED TO THE FULLEST EXTENT OF THE LAW. By approving this sketch, the customer acknowledges that, during the process of manufacturing, variations may occur in colors and other minor aspects, because of the use of different technologies for the acquisition and reproduction of images, and for the making of the suit itself. OMP is not responsible for such variations and deviations. For further information: www.ompracing.com

DATE: _____ REV. _____