

FIA 8856-2018

FIA APPROVED



1 GREY AREA >60% WHITE AREA

FOR SHOULDER STRIPES, A DIFFERENT AND MONOCHROMATIC COLOR MUST BE USED

| | | | | | | | | | |
|---------------------------|----------------------------|--------------------------|-----------------------|----------------------------|-------------------------|-----------------------|----------------------|-----------------------------|----------------------|
| CYAN XTI-501-244 | ROYAL BLUE XTI-501-041 | NAVY BLUE XTI-501-042 | VIOLET XTI-501-V | BLACK XTI-501-071 | ANTHRACITE X-501-082 | SILVER XTI-501-080 | WHITE XTI-501-020 | JAGUAR GREEN XTI-500-033 | GREEN XTI-501-032 |
| FLUO GREEN XTI-501-039 | FLUO YELLOW XTI-501-099 | YELLOW XTI-501-055 | ORANGE XTI-501-091 | FLUO ORANGE XTI-501-090 | RED XTI-501-061 | | | | |

2 BLUE AREA

STRETCH FABRIC - NOT PRINTABLE/EMBROIDERABLE

| | | | | | |
|---------------------------|--------------------------|--------------------|--------------------------|----------------------|----------------------------|
| ROYAL BLUE XTI-608-041 | NAVY BLUE XTI-608-042 | RED XTI-608-061 | DARK GREY XTI-608-082 | BLACK XTI-608-071 | FLUO YELLOW XTI-608-099 |
|---------------------------|--------------------------|--------------------|--------------------------|----------------------|----------------------------|

3 YELLOW AREA

*while stocks last

WRIST AND ANKLE CUFF'S FABRIC

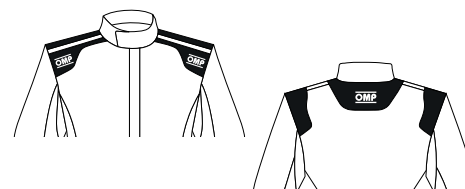
| | | | | | | | | | |
|-----------------------------|----------------------------|----------------------|----------------------------|------------------------|-------------------------|------------------------|-----------------------|-------------------------|------------------------|
| ROYAL BLUE XTI-105-N-041 | NAVY BLUE XTI-105-N-042 | RED XTI-105-N-061 | DARK GREY XTI-105-N-082 | BLACK XTI-105-N-071 | SILVER XTI-105-N-081 | WHITE XTI-105-N-020 | ECRÚ XTI-105-N-022 | YELLOW* XTI-105-N051 | BROWN* XTI-105-N010 |
|-----------------------------|----------------------------|----------------------|----------------------------|------------------------|-------------------------|------------------------|-----------------------|-------------------------|------------------------|

4 OMP LOGO AND MODEL

The OMP logo has a fixed position on shoulders and back.

IT CANNOT BE ALTERED OR REMOVED.

IT ALWAYS MUST BE WELL VISIBLE AND IN CONTRAST WITH THE BACKGROUND COLOR.



The suit model has a fixed position on the back.

IT CANNOT BE ALTERED OR REMOVED.

IT ALWAYS MUST BE WELL VISIBLE AND IN CONTRAST WITH THE BACKGROUND COLOR.

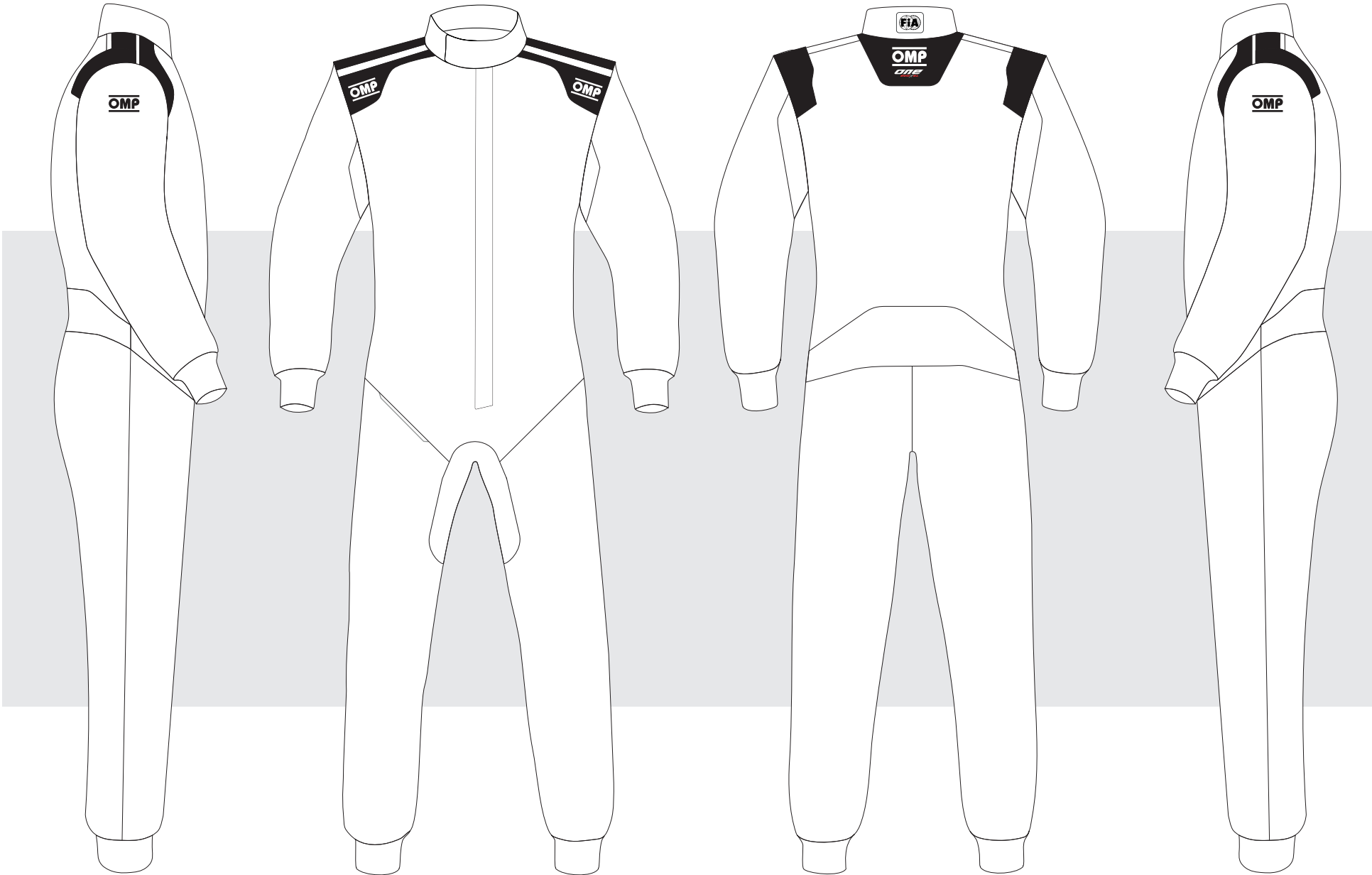


Customers are aware that OMP is free to change the colour of its logo in case these indications are not respected in the sketch.



CUSTOMER: _____ TEAM: _____ DRIVER NAME: _____

CUSTOMIZED SUIT CONFIGURATOR



IA0-1862

DATE: _____ REV. _____

© OMP RACING SPA - ALL RIGHTS RESERVED

THIS DESIGN IS THE INTELLECTUAL PROPERTY OF OMP RACING SPA - ANY REPRODUCTION WITHOUT PERMISSION WILL BE PROSECUTED TO THE FULLEST EXTENT OF THE LAW. By approving this sketch, the customer acknowledges that, during the process of manufacturing, variations may occur in colors and other minor aspects, because of the use of different technologies for the acquisition and reproduction of images, and for the making of the suit itself. OMP is not responsible for such variations and deviations. For further information: www.ompracing.com