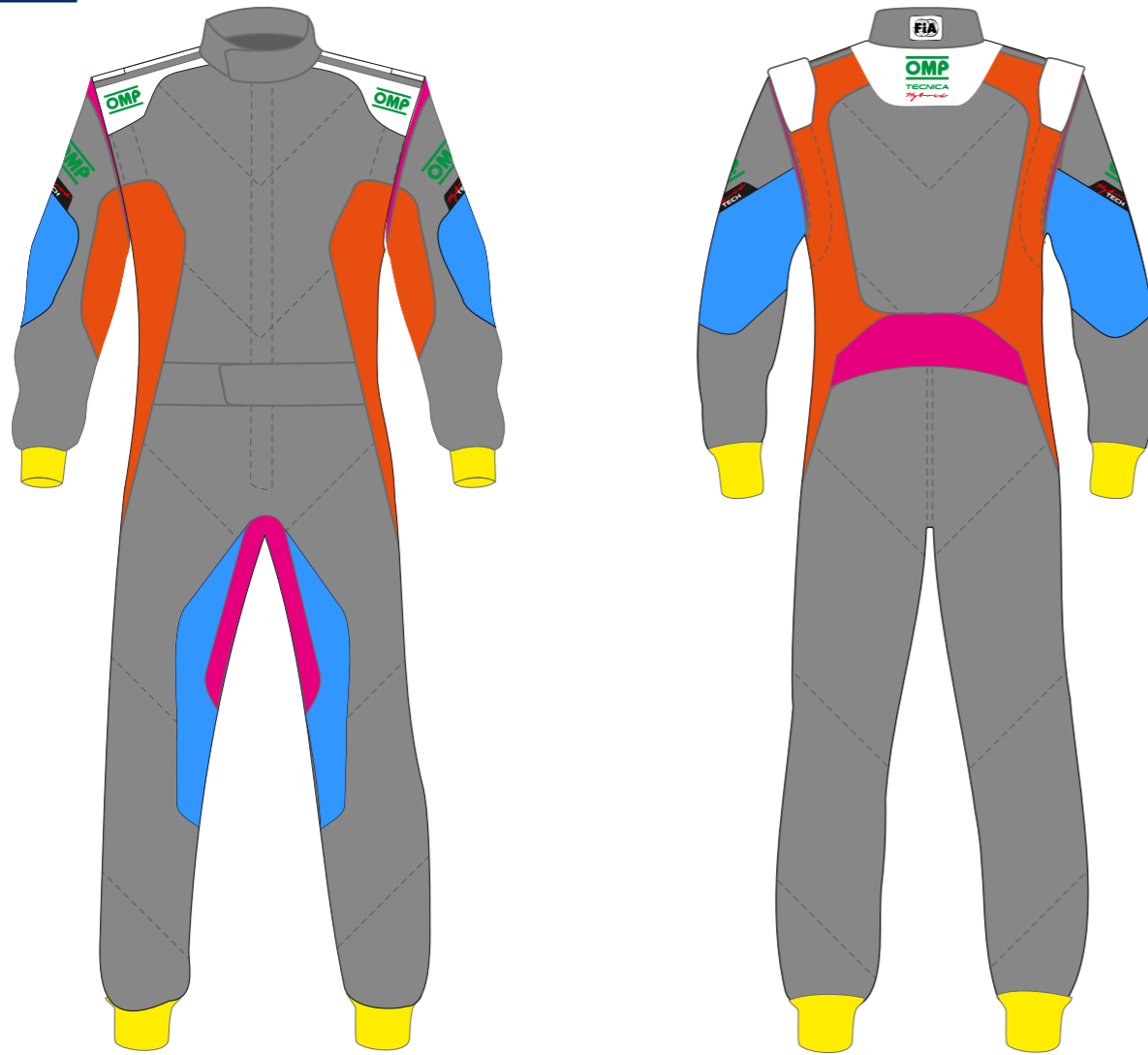


FIA 8856-2018



**1 GREY AREA** \*while stocks last

LIGHT BLUE XTI-147-040	TIFFANY XTI-147-375	CYAN XTI-147-244	ROYAL BLUE XTI-147-041	NAVY BLUE XTI-147-042	BLACK XTI-147-071	ANTHRACITE XTI-147-084	SILVER XTI-147-083	WHITE XTI-147-020	ECRÙ XTI-147-022
YELLOW XTI-147-051	FLUO YELLOW XTI-147-099	FLUO GREEN XTI-147-039	FLUO ORANGE XTI-147-090	PINK XTI-147-CS	RED XTI-147-061	GREEN* XTI-147-323C			

**WHITE AREA** FOR SHOULDER STRIPES, A DIFFERENT AND MONOCHROMATIC COLOR MUST BE USED

**2 ORANGE AREA** BREATHABLE FABRIC - NOT PRINTABLE/EMBROIDERABLE

WHITE XTI-604-020	ROYAL BLUE XTI-604-041	RED XTI-604-061	DARK GREY XTI-604-082	FLUO YELLOW XTI-604-099	BLACK XTI-604-071
----------------------	---------------------------	--------------------	--------------------------	----------------------------	----------------------

**3 PINK AREA** \*while stocks last  
INTERLOCK FABRIC - NOT PRINTABLE/EMBROIDERABLE

ROYAL BLUE XTI-102-041	NAVY BLUE XTI-102-042	RED XTI-102-061	DARK GREY XTI-102-082	BLACK XTI-102-071	SILVER XTI-102-081	WHITE XTI-102-020	ECRÙ XTI-102-028	FLUO YELLOW XTI-102-099	GREEN* XTI-102-031
YELLOW XTI-102-051									

**4 YELLOW AREA** \*while stocks last  
WRIST AND ANKLE CUFF'S FABRIC

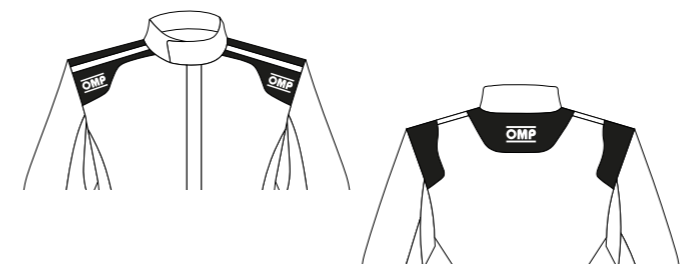
ROYAL BLUE XTI-105-N-041	NAVY BLUE XTI-105-N-042	RED XTI-105-N-061	DARK GREY XTI-105-N-082	BLACK XTI-105-N-071	SILVER XTI-105-N-081	WHITE XTI-105-N-020	ECRÙ XTI-105-N-022	YELLOW* XTI-105-N051	BROWN* XTI-105-N010
-----------------------------	----------------------------	----------------------	----------------------------	------------------------	-------------------------	------------------------	-----------------------	-------------------------	------------------------

**5 SUBLIMATION PRINTING AREA** VECTOR GRAPHICS

**6 OMP LOGO AND MODEL**

The OMP logo has a fixed position on shoulders, back and arms.

**IT CANNOT BE ALTERED OR REMOVED.**  
**IT ALWAYS MUST BE WELL VISIBLE AND IN CONTRAST WITH THE BACKGROUND COLOR.**



The suit model has a fixed position on the back.

**IT CANNOT BE ALTERED OR REMOVED.**  
**IT ALWAYS MUST BE WELL VISIBLE AND IN CONTRAST WITH THE BACKGROUND COLOR.**



**Customers are aware that OMP is free to change the colour of its logo in case these indications are not respected in the sketch.**

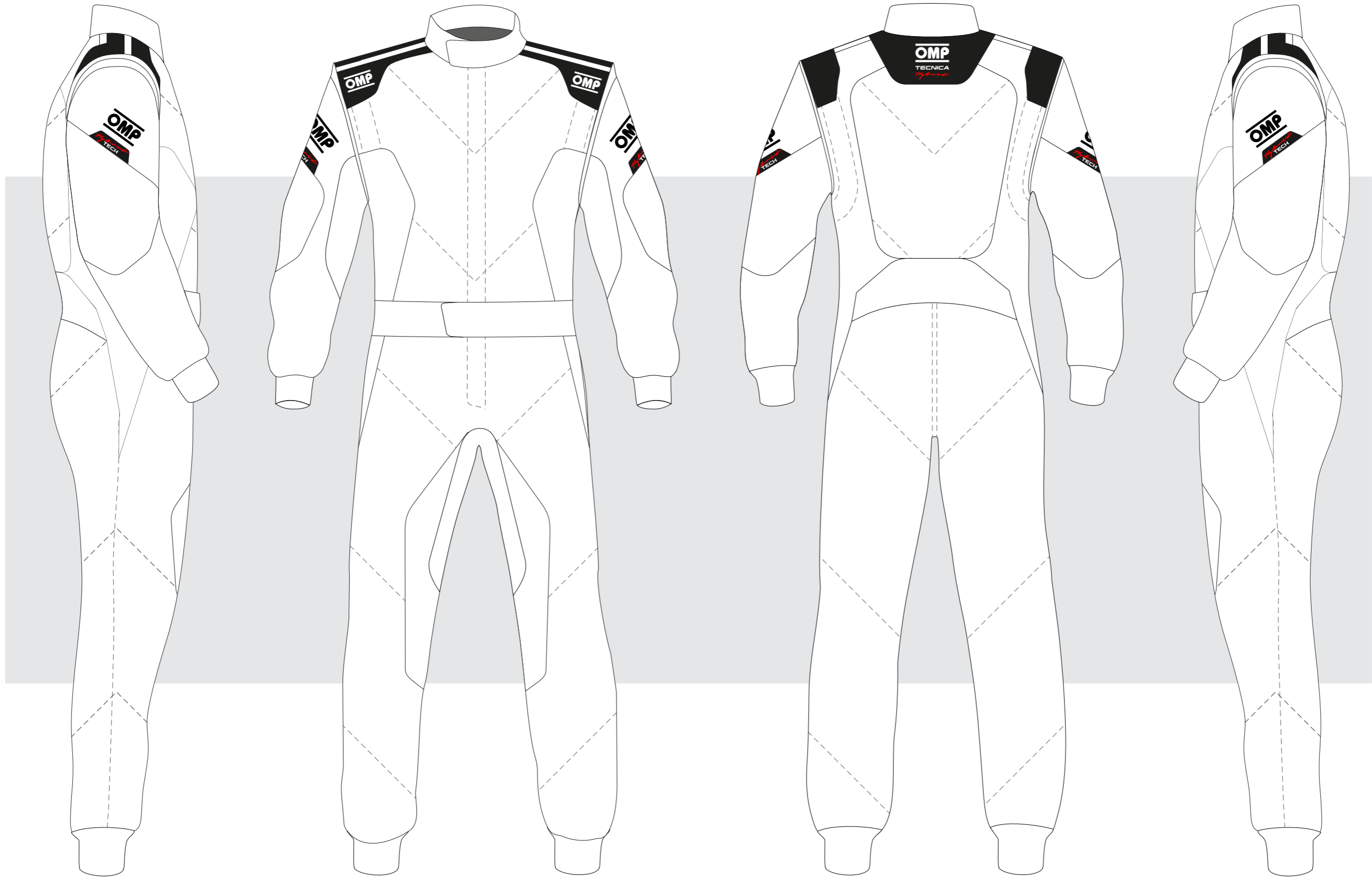


CUSTOMER: \_\_\_\_\_

TEAM: \_\_\_\_\_

DRIVER NAME: \_\_\_\_\_

CUSTOMIZED SUIT CONFIGURATOR



**TECNICA**  
*Hybrid*

IA0-1864

© OMP RACING SPA - ALL RIGHTS RESERVED

DATE: \_\_\_\_\_

REV. \_\_\_\_\_

THIS DESIGN IS THE INTELLECTUAL PROPERTY OF OMP RACING SPA - ANY REPRODUCTION WITHOUT PERMISSION WILL BE PROSECUTED TO THE FULLEST EXTENT OF THE LAW.  
By approving this sketch, the customer acknowledges that, during the process of manufacturing, variations may occur in colors and other minor aspects, because of the use of different technologies for the acquisition and reproduction of images, and for the making of the suit itself. OMP is not responsible for such variations and deviations. For further information: [www.ompracing.com](http://www.ompracing.com)